

# **MAIN AUDITORIUM**

# **TECHNICAL INFORMATION**

October 2017

Epsom Playhouse Ashley Avenue Epsom Surrey KT18 5AL

Technical Office 01372 728887

[playhousetech@epsom-ewell.gov.uk](mailto:playhousetech@epsom-ewell.gov.uk)

### Access

Dock door access is via shopping centre delivery yard. We have right of access, but not right to park. Parking for a van is therefore likely, but not guaranteed.

Parking for private cars is not permitted (use public multi-storey adjacent to the theatre). Private cars parked at the dock or in the yard will be fined or towed.

Dock floor is transit-van height. 6m flat run to stage.

### The Space

The Playhouse is an end-on proscenium theatre, with a courtyard-style auditorium (1 block of raked seating, aisles at the ends only, plus galleries the full depth of the side of the auditorium, perpendicular to the stage).

The auditorium seats 450 people in standard configuration, 432 people with the orchestra pit or 396 with the forestage in place.

Access to the auditorium from the foyer is to the left side of the auditorium at the front, and both sides at the rear via a crossover corridor outside of the auditorium itself

The stage has limited wing space, a flat floor and hemp flying for scenic items. The scene dock opens into the USL corner of the back wall of the stage. Access is blocked when any scenic backdrop is flown in.

Lighting and sound control is from a room with opening window at the back of the seating area, auditorium left. Follow-spots are above this level, centred in the auditorium, and are on a perch that is open to the auditorium ie. not in a booth.

### Fees and Charges

For professional companies, technical fees and charges are dependent on contractual obligations, and are subject to discussion with the Theatre Manager and Technical Manager.

For private hirers, most of the infrastructure and equipment of the Playhouse is included within the basic hire fees, but certain items are subject to additional charges. Chargeable items are listed at the end of this document, and latest prices are available on the Playhouse website. For details of technical staffing for private hirers, please contact the Technical Manager.

## STAGE

Dimensions and flying plots on separate pages.

Flying height (max. height for a flown cloth) 5.3m. (Height to grid 10.9m)

Rostra (staging) available : 1.2 x 2.4m sections, 4 at 15cm high, 4 at 30cm high, 4 at 45cm high

Stage is covered in black Marley-type floor. Scenery can be screwed or nailed to floor in moderation. Fixings larger than ordinary screws are not permitted.

3 sets black borders and hard masking legs as standard.

White cyc permanent on furthest upstage fly bar.

Sets of drapes available : black, red, oyster, blue, gold. Black and white gauzes.

Mid-stage black tabs permanently rigged on flown track. Rust velvet house tabs (drawn) electrically operated from prompt desk

**No onstage crossover behind cyc.** Crossover via building corridors (duration approx 30 sec.) unless drapes flown to create a crossover.

We have a **safety curtain** 2.5m upstage from the front stage edge (0.5m upstage of pros). This must be clear of fixed scenery or equipment at all times, and the curtain must be dropped at the interval.

Prompt desk stage right. Audio show relay and calls to dressing rooms. Comms to SL, lighting, sound, flies, followspots. CCTV show relay and pit/conductor relay to prompt desk, SL and SR wings, flies.

Paper plans available on request. Electronic stage groundplan, full auditorium groundplan, and sectional elevation are available from the technical section of the Playhouse website.

18 x standard stage brace & stage weight

### Flying

LX bars on electric winches, 5 of 300kg each over stage, plus 2 advance bars. Bar length 10m

Scenic flying on manual hemp sets. 20 of 250kg each. Bar Length 10m, not extendable.

Realistically, weights in excess of 150kg cannot be lifted manually on hemp sets. Weights from 75kg upwards cannot be flown smoothly.

### Orchestra Pit

11m x 3m, 2m deep (ie floor 2m beneath stage level).

Conductor's rostrum 0.2 or 0.4m high, 1.2m square.

Illuminated conductor's music stand.

18 x illuminated music stands.

CCTV camera to show conductor on monitors in wings, at prompt desk and on 2 gallery-mounted screens.

Access to pit through auditorium only.

Use of pit requires removal of first row of auditorium seating (18 seats)

## STAGE

### Forestage

11m x 2.5m stage extension in front of standard apron. Unsprung hardwood panels on metal framework. Black Marley floor covering available.

Use of forestage requires removal of first three rows of auditorium seating. (54 seats)

Note that forestage front edge is in front of main PA speakers and advance lighting bars.

### Access Equipment

14 - rung Tallescope

12 - rung Zarges Skymaster 3-part A-frame ladder

8 - rung A-frame ladders (3 of)

### Dressing Rooms

1 & 2 (downstairs) capacity 20 each. 3 & 4 capacity 8 each. 5 capacity 30. Total 86 persons.

No company office. No green room.

Domestic washing machine & tumble dryer. Iron & board.

Audio show relay and calls to all dressing rooms. No video relay.

Dressing rooms all located to stage right side of stage, with corridor access to stage left.

Downstairs dressing rooms have flat access to stage right wing. Steps in corridor to stage left.

## STAGE : MAIN DIMENSIONS

Pros.	Width	11.5m	37' 9"
	Width (between tormentors)	9.1m	29'9"
	Height	4.97m	16' 4"
Back wall to :	Safety Curtain	6.85m	22' 5"
	Pros.	7.83m	25' 3"
	Stage edge	9.35m	30' 8"
	Forestage edge	11.87m	38' 11"
Width between :	Fly floors	11.2m	35' 9"
	Columns	14.35m	47' 1"
Wing Depth :	SR	3.2m	10' 6"
	SL	1.64m	5' 4"
Height :	Grid	10.88m	35' 8"
	Under fly floor	5.18m	16' 9"
	Into wings	2.1m	6' 10"
Get – In	Width	1.5m	4' 11"
	Height	2.9m	9' 6"

# HANGING PLOT

**PRODUCTION :**

**DATE :**

BAR	HANG	DISTANCE FROM PROS (m)	DISTANCE FROM STAGE EDGE (m)
22	Cyc - permanent	7.60	8.92
21		7.40	8.72
20		7.20	8.52
Winch	Cyc LX	6.90	8.22
19		6.60	7.92
18		6.40	7.72
17		6.20	7.52
Winch	LX4	6.03	7.35
16		5.80	6.12
15		5.60	6.92
14		5.38	6.70
13		5.15	6.47
Winch	LX3	4.93	6.25
12		4.63	5.95
11	Black Tabs - permanent	4.25	5.57
10a	Border - permanent	4.20	5.52
10		3.98	5.30
9		3.63	4.95
8		3.43	4.75
Winch	LX2	3.18	4.50
7		2.85	4.17
6		2.68	4.00
5		2.48	3.80
4		2.27	3.59
3		2.07	3.39
2	Cinema screen - permanent	1.87	3.19
Winch	LX1	1.62	2.94
1		1.32	2.64
0	House border - permanent	1.07	2.39

**SWL :** Hemps 1-10, 12-22 : 250kg  
 All LX winches : 300kg  
 11 handwinch : 225kg (permanent tabs)  
 0 and 10a : 50kg

All bars are 10m long and cannot be extended.

**NOTE :**

Allow for borders DS of LX 2, 4 and cyc LX bar plus masking for any flown pieces.  
 If possible leave 1 bar each side of each LX bar empty to avoid snagging flown pieces on lanterns.

## General

Standard rig of fresnels and profiles overhead, profiles FoH, and source four PARs on booms. (See plan on separate page).

Booms are permanent, and cannot be moved.

LX bars on electric winches, 5 of 300kg each. Onstage and advance bars are 10m wide ladder bars.

Small stock of lanterns additional to those in the standard rig.

Stock of Lee filters (101-205), cables, grelcos, gobos, gobo holders etc.

186 x 2.4kW dimmers. 6 x 4.8kW dimmers.

ETC Element 500 lighting desk (Cuelist plus 40 submasters).

DMX control. Facility to patch touring desks to DMX in control room, auditorium, FoH sound position or at prompt desk. Houselights are manual control, not DMX.

2 x DMX lines from control room to dimmer room, patchable via splitters to both fly floors, both wings (US and DS), onstage LX bars (all bars on 1 feed), each advance bar (individually), LX bridges and pit. Either DMX universe may appear at any point, but not both universes. 2 further DMX lines from control room direct to SR fly floor.

2 x Pani HMI 1200 followspots on perch at rear of auditorium, with view of whole stage (but max height of 2m above floor upstage)

Production desk position in mid stalls with mains power, 2 x DMX line, 2 x Cat 5 line, comms, cuelight, houselight control, working light control and audio tieline.

## Touring Power

63A single phase supply in stage left wing. 63A or 32A Ceeform connectors (nominally 'sound power').

100A 3-phase supply in stage left wing. 125A or 63A Ceeform connector (No facility to 'tail in'). This supply is shared with house dimmers for onstage booms and advance LX bars.

## Standard LX Circuits / Patch

Bar	No.of Outlets	No. of circuits used in Std Rig	No. of extras circuits patched
Bridge 1	10	10	0
Bridge 2	3	3	0
Advance 1	12	10	0
Advance 2	12	0	0
LX 1	12	10	2
LX 2	12	10	2
LX 3	12	6	2
LX 4	16	4	12
LX 5 (cyc)	4	4	0
Floor Dips	24	0	24
Onstage Booms	6 each	5 each	0
FoH Booms	5 each	4 each	2

Onstage booms and advance bars are fed from a 48-channel patchable rack. With standard patch, 12 channels are spare. These sockets are fed direct from patch panel in dimmer room

Circuits 151-198 (LX3, 4, dips, spares) are fed from 50A 3-phase on LX floor. These cannot be used to full capacity simultaneously.

The 6 x 5kW dimmers in the main system have outlets on the LX floor for LX 5 cyc battens (4cct) and 2 spares.

LX 1-4 multicores run off SR to LX floor patch panels.

Remaining areas are hardwired to dimmers.

**Lantern List**

Unit	Qty in Std Rig	Qty Extra	Beam Angle	Wattage	Weight (kg)	Colour size (mm)
Sil 25*	12	0	16-32	1000	13.9	240
Selecon 15/30*	8	6	15-30	1200	14.5	180
Source 4 Zoom 15/30*	16	0	15-30	575	9.5	180
Harmony 22/40 *	8	0	22-40	1000	12	180
Sil 30	4	9	22-40	1000	11.1	180
Source 4 zoom 25/50	4	3	25-50	575	9.5	180
Minim 23	0	4	20	500	4	120
Patt 23	0	4	20	500	4	100
Patt 264	0	2	17	1000	7.5	160
Harmony F	24	4	8-65	1000	6.5	180
Patt 743	8	0	15-82	1000	10	210
Patt 243	4	6	16-50	2000	16	290
Minim F	0	2	13-65	500	3	120
Source 4 PAR	48	25	See note	575	3	180
Coda 4	10	10		4 x 500	16	210 x 235
Patt 252	0	2	See note	2000	18	100

Source 4 PAR lenses : equivalent to CP60 (VN), CP61 (N), CP62 (M) and CP95 (W).

All fresnels have barndoors.

Gobo holders in A & B sizes, but not 1 of each per lantern.

7 x Source 4 iris

6 x Silhouette iris

4 x Harmony iris

2.5", 3", 4" lenses for patt 252 (1 of each lens)

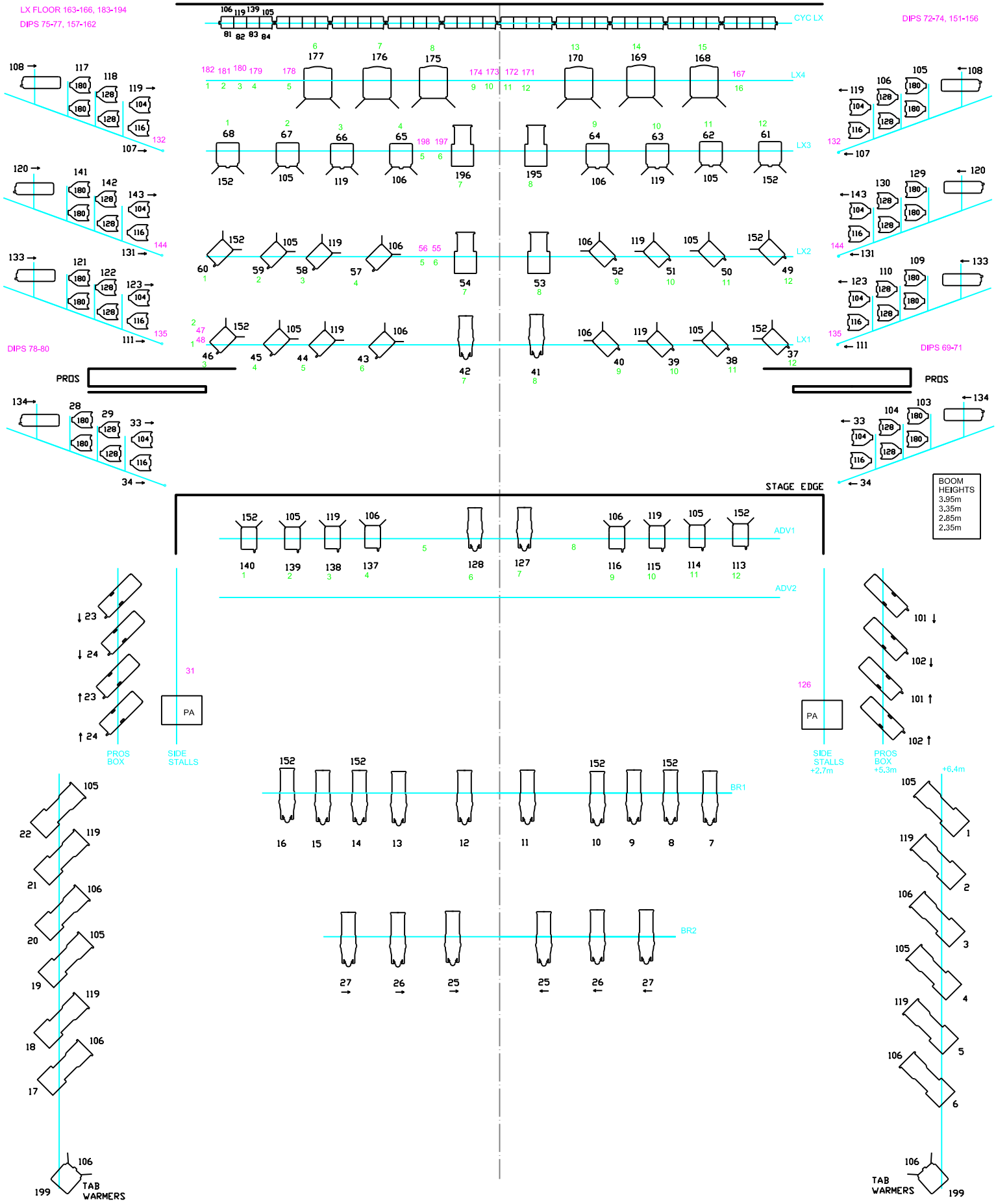
1 x fx wheel with either storm cloud or fire disc

**\* Note that all FoH and boom profiles form a fixed rig and cannot be moved. Auditorium side Sil 25s are also fixed focus.**



LX FLOOR 163-166, 183-194  
DIPS 75-77, 157-162

DIPS 72-74, 151-156



**EPSOM PLAYHOUSE**  
STANDARD LIGHTING RIG SCHEMATIC  
SEPT 2015  
NOT TO SCALE

ALL GEL IS LEE  
FOH RIG IS FIXED POSITION  
AND CANNOT BE MOVED  
CH1-6 AND 17-22 ARE FIXED FOCUS / COLOUR

We find that our house system is suitable for spoken word, vocals, and jazz groups or small 'big band' type bands, but is NOT suited to 'rock-and-roll' type shows.

## Front of House

2 x QSC RMX 1450 amps drive 1 x Martin F12 per amp/channel – 1 flown at pros height, 1 at gallery floor height.

1 x QSC RMX 1850 amp drives 1 x Martin S218+ bass unit per channel

1 x Yamaha XP5000 amp drives 4 x Martin DD6 front fill

1 x Yamaha XP5000 amp drives 4 x Martin DD6 balcony fill (L & R, upstairs and downstairs)

Combined system power 1400 Watts per channel

Front of house system is permanent and not movable.

Front of house mix has Allen & Heath iDr8 controller set for EQ and delays. This is not adjustable. A secondary 31-band EQ is in-line between mix out and controller in, for user adjustment of system EQ.

## Foldback

3 x 350 W / channel amps

6 x Martin F10 / F12

2 x JBL 15" + horn wedge

## Mixing

Allen & Heath GL3300 24:8:2, permanently situated in a control room at the back of the auditorium, with an opening window.

A second mix position is available for companies' own mixing desks or our Soundcraft LX7ii 24:4:2, at the rear of the auditorium on the auditorium right side gallery. This can be fed by a 12 send, 4 return multicore from the main house patchbay if required. 4 x Cat 5 lines to control room patchbay.

## Microphones

6 x AKG C451 / CK1 cardioid condenser

3 x Beyer rifle condenser

3 x Sennheiser MD 451

5 x Shure SM58

2 x Shure SM57

5 x EMO passive DI

Shure PG Drum mic kit (3 x snare/tom + kick)

8 channels Sennheiser EW300 UHF radio mic system  
(8 beltpack, 4 hand-held transmitters)

60 audio tielines from stage to control room.

Additional 30-way stagebox available.

10 tielines from orchestra pit to control room.

## Playback / Signal Processing

2 x CD

2 x Minidisc

1 x Mac computer running QLab 3

2 x effects unit (Yamaha SPX & Lexicon MX300)

4 x dual 31-band graphic (Yamaha)

2 x Alesis 3630 Dual channel compressor/limiter

All equipment in control room only.

## **FoH Mixing** (for companies' own desks)

Position is at rear of auditorium, on the **auditorium right edge, just outside of the line of the proscenium opening**. Central position is not possible.

Flat floor area 2m wide by 4m deep.

Manual lifting of equipment up auditorium stairs from stage to mix position.

Multicore run to stage : 30m.

12 send / 4 return multicore to main sound patchbay.

4 x Cat 5 line to control room patchbay

Feeds to either complete house system, or individually to amps for bass, front fills etc but with no processing.

## **Touring Power**

63A single phase supply in stage left wing. 63A or 32A Ceeform connectors (nominally 'sound power' but may be made available to lighting).

## **Production Network**

Network points (2 x RJ45 line on Ethercon connectors each) appear around the technical areas, returning to a patch panel in the control room. A network switch is available at the patch panel position.

Network points are located :

- Control room (LX desk)
- Control room (sound patch panel)
- FoH mixing desk position (4 x lines)
- DSR wing
- DSL wing
- Orchestra pit
- Production desk
- Front lighting bridge

Screen permanently mounted on electric winch on line 2, tensioned to steel framework.

Screen dimensions : 7m x 3m      High-gain, perforated surface. (Front-projection only)  
Variable width screen masking

Throw from projection ports to screen : 21.5m (70ft 6in)

(It is rarely practical to fly the screen in and out during a performance. The screen travel time is approximately 1 minute, and the house border must be reset between screen use and stage use.)

3 x JBL horn / mid speakers stand on stage behind screen. Surround speakers permanently mounted in auditorium.

### **Other Projection**

Hitachi data projector – 7000 lumen – medium zoom lens and wide fixed lens,  
with flying/hanging mounts

Macbook running Qlab 3 with video licence

16mm film projector

35mm slide projector (Carousel type)

Portable 2.4m (8ft) square projection screen (tripod legs, front-projection only)

## CONTACTS

Simon Banks	Technical Manager
Phil Doswell	Technician
Mair Baker	Technician

T 01372 728887

F 01372 726228

E [playhousetech@epsom-ewell.gov.uk](mailto:playhousetech@epsom-ewell.gov.uk)

Epsom Playhouse  
Ashley Avenue  
Epsom  
Surrey  
KT18 5AL

[www.epsomplayhouse.co.uk](http://www.epsomplayhouse.co.uk)

Box Office 01372 742555

Admin 01372 742226

## CHARGEABLE ITEMS FOR PRIVATE HIRERS

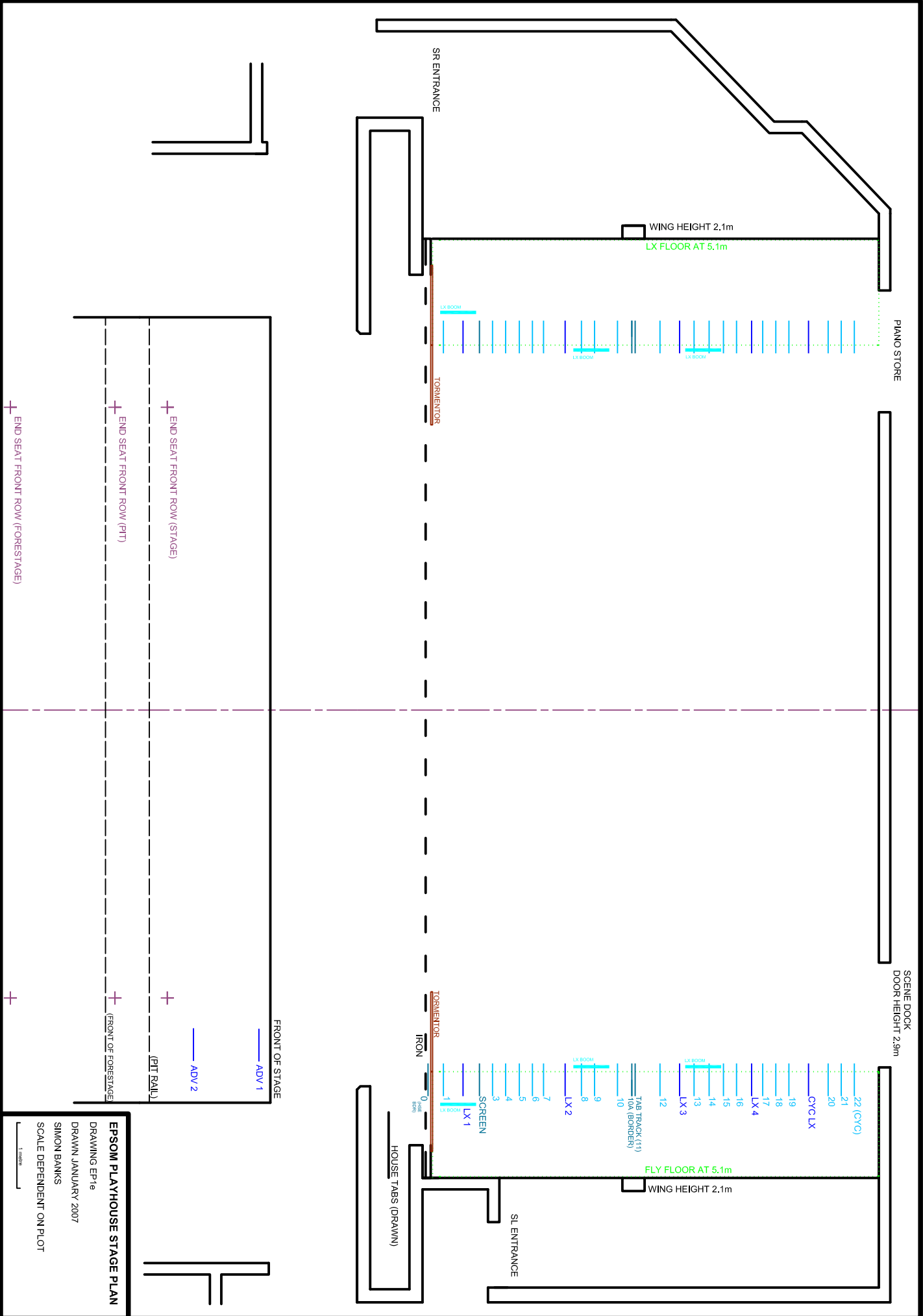
Technical items which incur additional fees for use :

Steinway Grand piano  
Tuning of piano

Floor format changes (orchestra pit or forestage)

Radio Mics  
Hazer  
Smoke machine  
Data projector

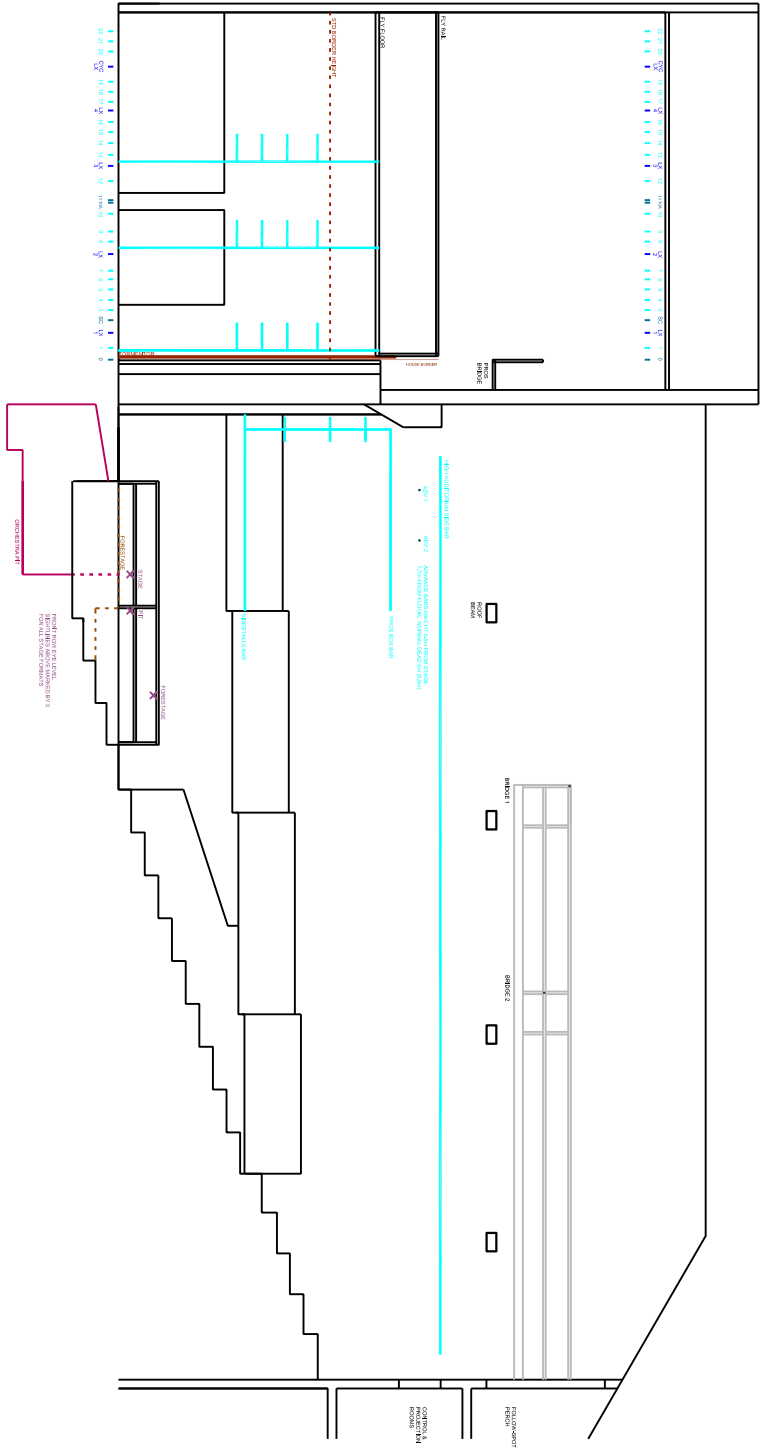
Current hire charges are available from the technical section of the Playhouse website.



**EPsOM PLAYHOUSE STAGE PLAN**

DRAWING EP1e  
 DRAWN JANUARY 2007  
 SIMON BANKS  
 SCALE DEPENDENT ON PLOT

1 metre



**EPSOM PLAYHOUSE AUDITORIUM SECTION**

DRAWING EP3

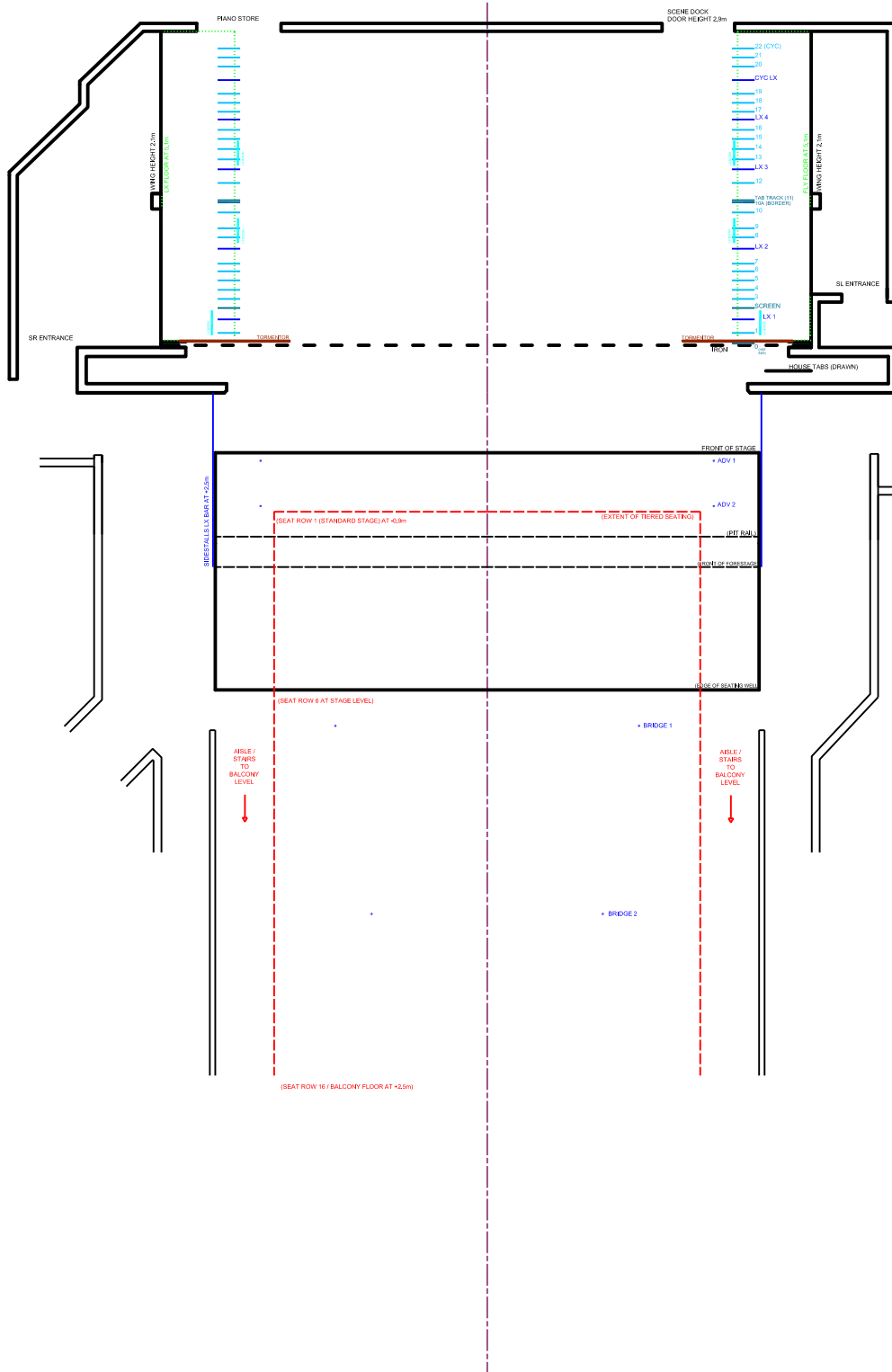
DRAWN: JANUARY 2012

SIMON BANKS

SCALE DEPENDENT ON PLOT







**EPSOM PLAYHOUSE AUDITORIUM PLAN**

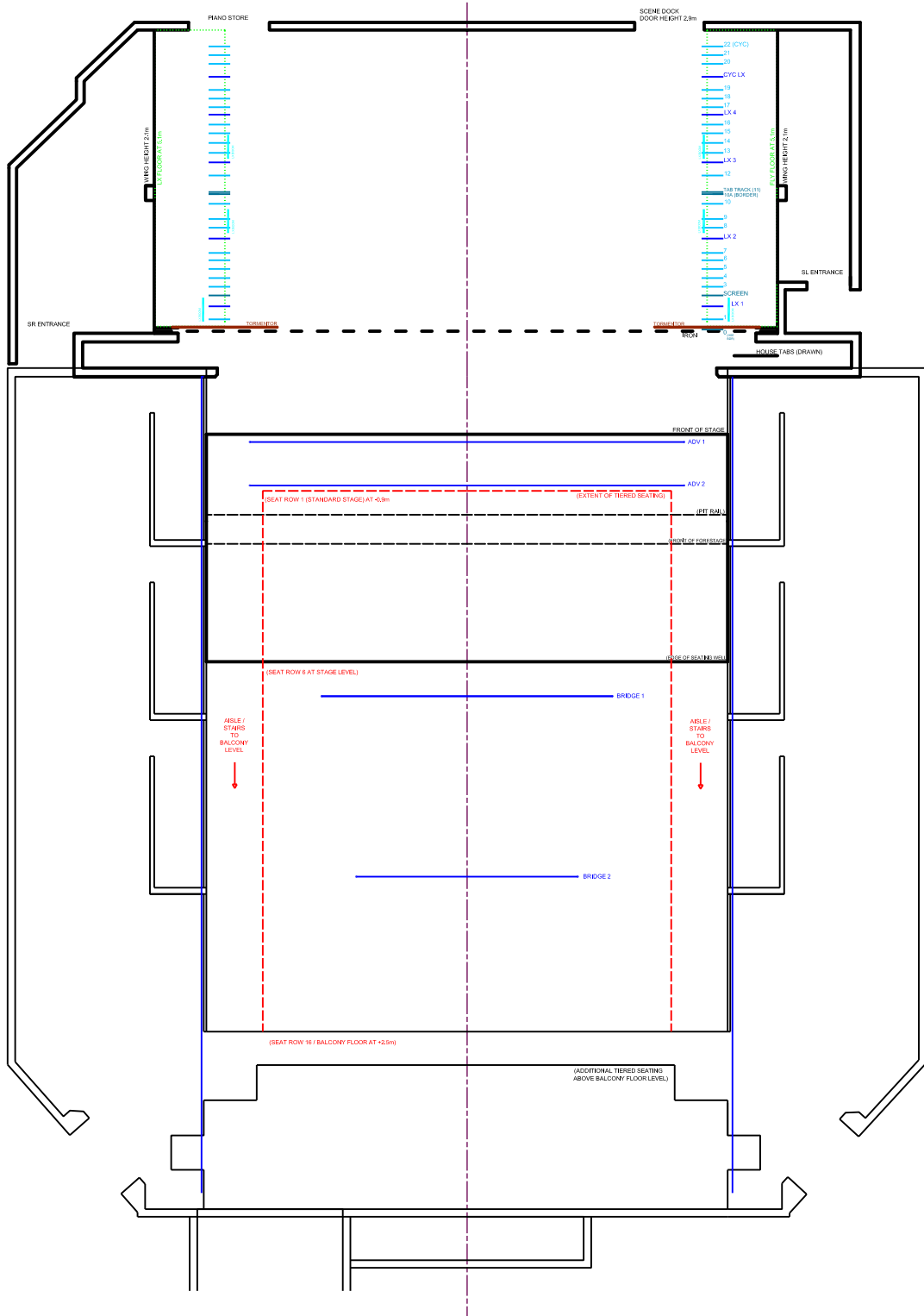
DRAWING EP 2 : GROUND LEVEL

DRAWN FEBRUARY 2013

SIMON BANKS

SCALE 1:150 AT A4





**EPSOM PLAYHOUSE AUDITORIUM PLAN**

DRAWING EP 2 : BALCONY LEVEL

DRAWN FEBRUARY 2013

SIMON BANKS

SCALE 1:150 AT A4

